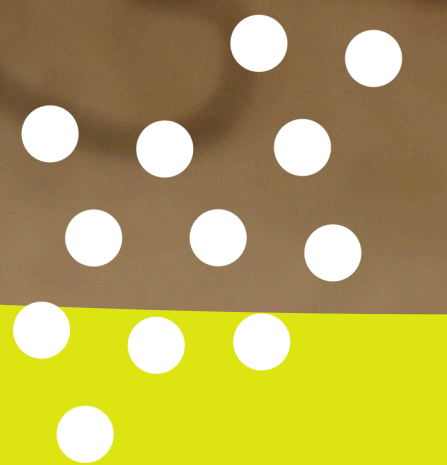




WEST END HOUSE

Virtual **Annual** **Celebration**

Restore. Rebuild. Reimagine
June 17, 2021



New Balance
Foundation
is a proud
supporter and
lead sponsor for
West End House
and their annual
celebration.



A Message from Andrea & Mindy

Dear Friends,

Thank you for all of your contributions over the past year. You have answered the call to help West End House remain a place of inspiration, hope, and renewal in times of trauma and loss. The partnerships we forged with our families, our young people, our schools, community partners, and volunteers, have strengthened us. The Massachusetts Nonprofit Network has even recognized West End House as one of the most resilient nonprofits across the state in 2021.

As we look to restore, rebuild, and reimagine our work in the wake of the twin pandemics, we do so with a solid foundation. It is a foundation that centers youth voice, prioritizes social emotional wellness, and engages parents and caregivers as critical partners in our work. It is a foundation led by incredible youth development professionals whose dedication and commitment to our community are unparalleled.

You are pivotal to the future of West End House. There is much work to be done to respond to systemic racism and the inequities exacerbated by the Covid-19 pandemic. This work will be challenging and will ultimately unlock greater opportunities for our young people.

Now is the time to reinvest in young people who are ready to learn, ready to work, and ready to lead. Thank you again for your support. You are making a major impact on Boston's future leaders.



Mindy Berman
Board Presidentt



Andrea Howard
Chief Executive Officer



Alumni Speakers

Bie Aweh

Senior People Growth Manager, Door Dash

Bie Aweh is a talent developer focused on equity and inclusion strategy, with nearly a decade of experience in coaching adult learners, building sustainable partnerships, designing and facilitating training, and driving social change by providing career pathways for underrepresented groups. Bie's passion for connecting underrepresented populations to the innovation economy fuels the work she does today at DoorDash as the Senior People Growth Manager for Women/Non-binary and underrepresented talent development. In this capacity, she delivers high-impact learning experiences for women and non-binary people of all backgrounds and underrepresented people of color, while also exploring different levers to ensure these groups can actualize their full potential. As technology continues to drive economic growth, Bie is a firm believer that people from underrepresented groups need to be in positions to contribute not only because it is the right thing to do, but also because it is great for business.



Anim Aweh, LCSW

Aweh Support, LLC

A licensed therapist with nearly a decade of clinical experience, Anim Aweh is the founder of Aweh Support, LLC., which offers a judgment-free zone for African American women in pursuit of quality, personalized counseling. Drawing on her own experience as a daughter of Haitian and Cameroon parents, Anim seeks to provide a holistic approach where health and wellness are understood to be intertwined. Seeking to break down barriers to accessing mental healthcare, Anim launched a social awareness campaign, Therapy Over Silence which includes social media, merchandise, and a podcast. Anim has also authored a children's book, Elijah was Brave, a must-read for black and brown families dealing with a child with mental health issues. On her website, Anim reflects, "Treating mental health conditions, although taxing at times, is very rewarding. I see the fruits of my labor when my patients make headways and discover their own purpose life, the same way I discovered mine many moons ago in high school."



Lead Sponsors



Premier Presenting Sponsors



Charlotte & Samuel
Berk Family

John A. Parker
Family Trust

Presenting Sponsors



Stephanie
& Rick Smith

Premier Partner Sponsors



NEW ENGLAND
DEVELOPMENT

ROMANOW



CONTAINER



Turner

Anonymous

Henry &
Andrea Barr

Mindy Berman &
Dan Solomon

Bill Margolin &
Bryna Leeder

Chris &
Susan Richmond

Charles &
Fran Rodgers

Stan &
Kay Schlozman

Partner Sponsors



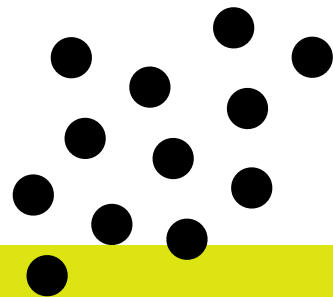
CBRE



Laurie A. Kaplan

The Mulligan
Family

Rick Taranto &
Jon Ellms



West End House Leadership

Board of Directors

Mindy Berman, President
Amy Tull Atwood, Vice President
Joseph I. Mulligan III, Vice President
Christopher Murphy, Vice President
Richard Taranto, Vice President
Katherine Hope, Treasurer
Gerald Walsh, Clerk
Andrew J. Musto, Immediate Past President
Henry Barr*
Carlotte Berk
Maura Nolan Brown
Bithiah Carter
Kassia Davis
Kevin Depina
James Gordon
Patricia Lewis
William Margolin
Christopher Richmond*
Charles Rodgers*
Neal Yanofsky*

*Past Board President

Board of Advisors

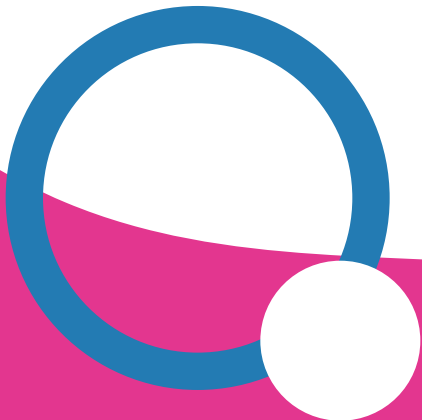
Deborah Black
Sid Boorstein
Alisha Collins
Steven M. Curley
Matthew Day
Meredith Eppel Jylkka
Jessica B. Hart
Rep. Kevin Honan
John Humphreys
Oscar Lopez
John Parker
Kalina Philalom
Kate Pierre-Pierre
Dan Romanow
Cheri Ruane
Tali Sason
Stan Schlozman
Alison Stanton
Robert Weinberg

In Memoriam - Advisor Emeritus

Harold Brown

Event Committee

Adrienne Andry
Bie Aweh
Jeffrey Babcock
Josh Bhatti
Kara Bresciani
Kristen Brown
Jimmy Caruso
Winston Daley
Kassia Davis
Kevin Depina
Lyslynn Lacoste
Jane Lewis
Samantha Lord
Bobby Main
Jose Mendoza
Andrew J. Musto
Allyce Najimy
Adam Romanow
Diego Rosenfeld
Stephanie Smith
Felice Soorenko
Ellie Sperazza
Alison Stanton
Reynaldo Sylla
Richard Taranto
Cusaj Thomas
Sarah Waskevich
Lynn Whitmore
Brooke Worthing





**Thank you to our corporate
and foundation supporters
who made annual non-event
gifts of \$5,000 or more,
including in-kind donations,
over the past year!**

New Balance Foundation
Cummings Foundation
Eric & Jane Nord Family Fund
The Hamilton Company Charitable Foundation
Linde Family Foundation
The Boston Foundation
State Street Foundation
Clipper Ship Foundation, Inc.
Boston After School and Beyond
Amelia Peabody Foundation
Liberty Mutual Foundation
The Charles Hayden Foundation
The Klarman Family Foundation
John Moriarty & Associates
Waldron Charitable Fund
Bodega
John Hancock Financial Services
New England Development
Grubhub
Richard K. Lubin Family Foundation
Schrafft Charitable Trust
AEG Community Foundation
BoSTEM
Boston Children's Collaboration for Community Health
Rockland Trust – Blue Hills Charitable Foundation

Shippy Foundation
United Way of Massachusetts Bay, Inc.
Coca-Cola
National Development
Dell Technologies
The Nehemias Gorin Foundation
DoorDash
Harvard Allston Partnership Fund
Blue Cross Blue Shield of Massachusetts
Google
The Davis Companies
Elkus Manfredi Architects
Deborah Munroe Noonan Memorial Fund,
Bank of America, N.A., Trustee
Nyce Family Foundation
Youths' Friends Association, Inc.
Bushrod H. Campbell and Adah F. Hall Charity Fund
ButcherBox
Summer Fund
Highland Street Foundation
Brighton Marine Health Center
Cambridge Savings Charitable Foundation
Karas & Karas Glass
Mary W.B. Curtis Trust
Massachusetts Convention Center Authority
TD Charitable Foundation

Investing in Young People

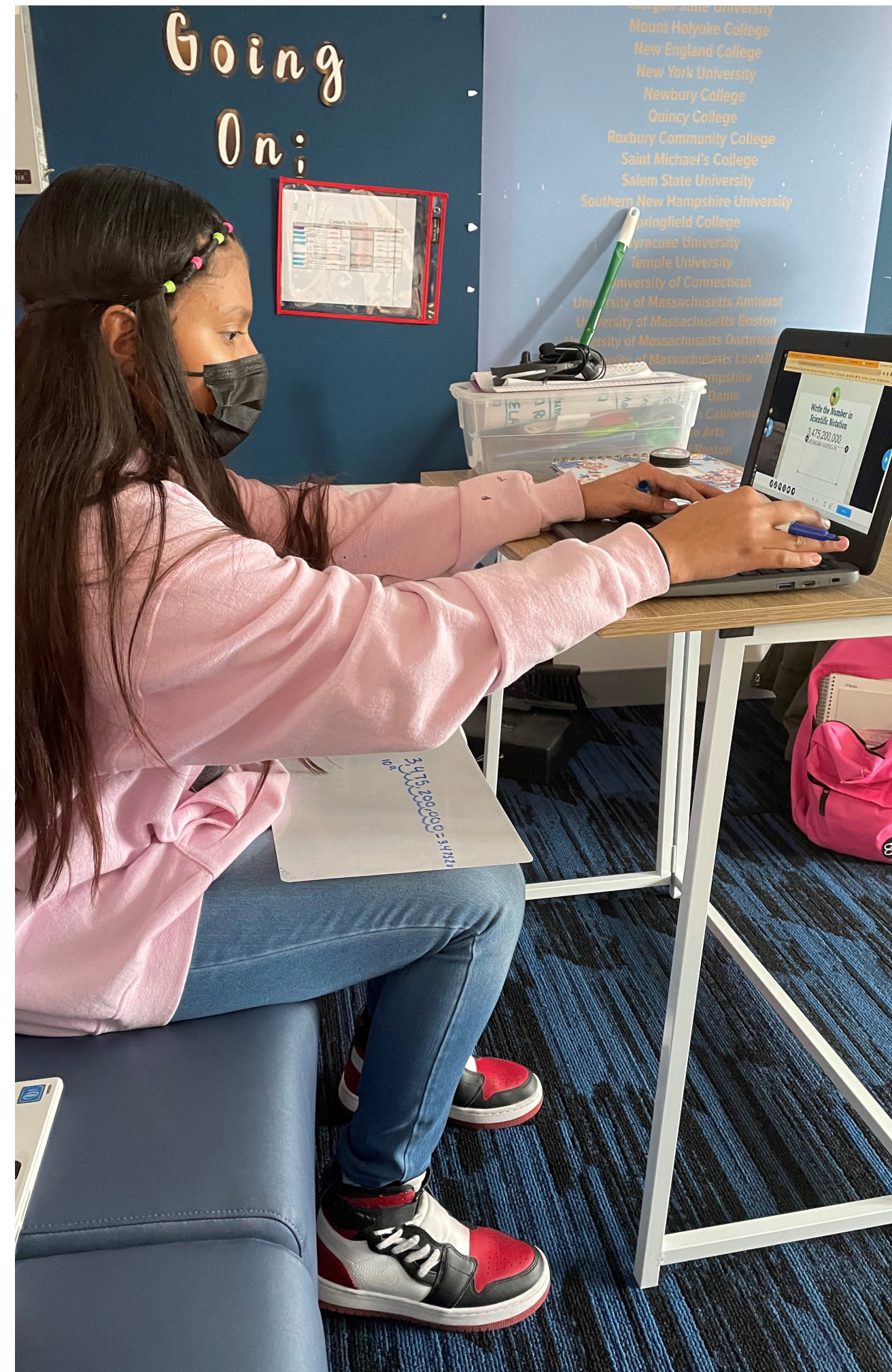
Despite the global pandemic, our young people continue to succeed academically, explore and master the arts, develop career pathways and adopt healthy lifestyles.

893 young people aged 8-24
served in 2020

In July 2020, **we were among the first to reopen for in-person programming**. Wearing masks and 6 feet apart, our young people were undeterred in their pursuit of visual and performing arts, nature walks in Ringer Park, swimming, yoga, and project based learning.

While Boston Public Schools stayed remote in the fall, **we launched in-person Learning Hubs** offering high speed internet, welcoming and supportive staff supervision, and delicious and nutritious scratch made meals. After school hours, hubs created fashion shows and animated videos, invented physically distanced games like bottle toss relay, expanded their fitness and creativity and held club-wide contests over Zoom.

As the world (and schools) reopen, youth programs continue to adapt. This spring we invested in **a major re-engagement effort with teens**, as seasoned staff members traveled to area parks and apartment buildings to reconnect with young people and welcome them back into our building as we expanded our operating hours.



Fostering College & Career Success

The relationships we build with young people span a decade or more. On a foundation built on trust and mutual respect, we empower young people to pursue and achieve their college and career goals.

Visits to local campuses and companies, career panels and guest speakers have continued in a virtual format throughout the pandemic. In person, we have offered **professional development and leadership opportunities** to young people including grants provided by West End House for unpaid internships secured by our alumni.

College coaching begins during high school for all of our youth, allowing us to maintain supportive connections throughout the application, financial aid, and transition process. Since joining SuccessBoston in 2014, we have been a leader in fostering academic persistence and completion among our college-age youth. 88% of 1st year college students persist to their 2nd year and 93% of 2nd year students persist to their 3rd year. . Currently, three talented and dedicated full-time staff provide coaching and persistence support to 250 young adults who attend colleges around the country.

As young people confront the increased financial pressures of the pandemic, we work with them to develop college and career plans that respect the complexity of the decisions they face. As always, we remain committed to meeting our alumni where they're at as each individual finds their own pathway to success.



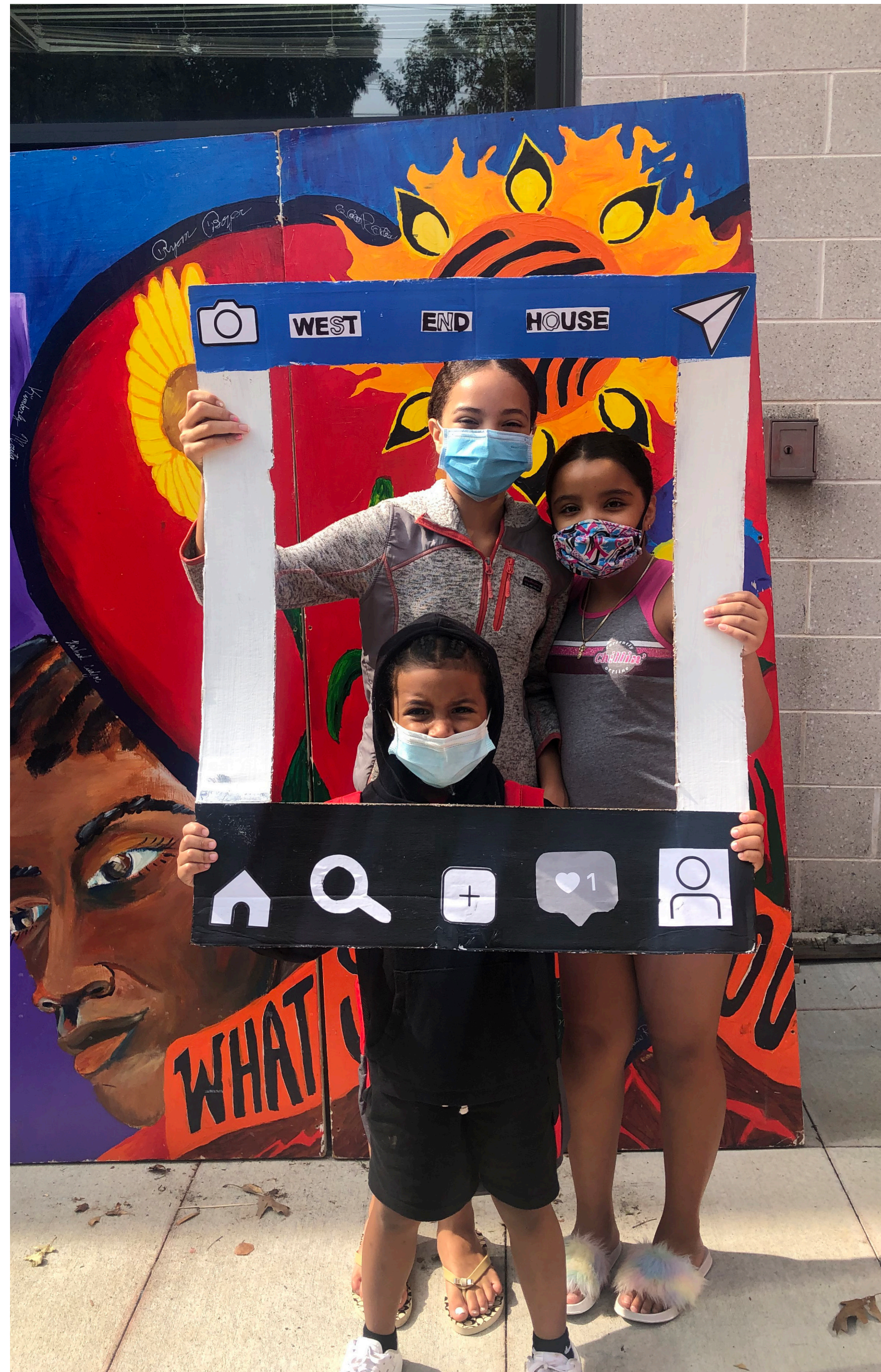
Family and Alumni Partnerships

The pandemic may have separated us physically, but our connections with our community have grown even stronger.

In March 2020 we implemented a full grocery delivery and distribution service. Over 1,400 people from more than 300 families have been supported by the program - requiring us to shift from serving 103,000 meals on-site in 2019 to delivering 166 TONS of food (333,000 lbs.) to families and alumni living throughout the city.

This program provided a new connection point with our families, and bilingual staff members strengthen these partnerships. This year we launched “FAN Club” -- our Family Advisory Network--which encourages parent-to-parent networking, volunteering, and voice in our decision-making.

Alumni have long been welcomed on our boards and committees - and today's young people benefit from their participation in career panels, volunteer opportunities, and internship supervision. Inspired by the need to maintain these connections virtually, this year we launched a new video series, [Alumni Spotlight](#). These videos are primarily intended to offer current youth powerful examples and stories of success, shared by alumni who are living their childhood aspirations.

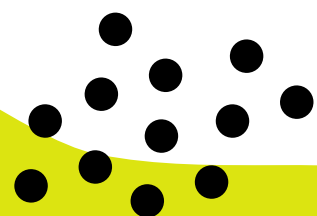


1,400+

people from more than
300 families supported
by the program

166 tons

of food provided to families
and alumni living in Boston





Taking Action for Racial Justice

Following the murder of George Floyd in 2020, we committed to going deeper in working to end racism. Staff members from our Equity + Social Justice Team and BIPOC caucus provide guidance and leadership as we seek to apply an anti-racist lens to all we do.

Ongoing professional development at every level provides a shared language and understanding that ending racism is fundamental to ensuring opportunity for our youth. In December 2020, our Board of Directors seeded a racial equity fund with \$125,000. This summer, a portion of these funds will be used to create a social work position for our agency, focused on healing the legacy of racial trauma.

As always, young people are held at the center of our efforts. Most recently, through a partnership with City Mission, Making Change Crew offers a new outlet for young people to explore identity, access, agency and activism. We are also immensely proud to publicize a documentary by graduating Senior ReignYah Grant, selected for recognition in the Boys & Girls Clubs of America National Arts Contests. Titled “What’s Going On?”, the film explores the classic Marvin Gaye song through conversations with West End House staff members, illuminating its relevance in our lives today.

Expand Your Impact

Empower the next generation of leaders with a gift tonight



\$15,000

supports the Artist in Residence Initiative**

** will be matched 1:1 by the Richard K. Lubin Family Foundation



\$10,000

provides 1 month of college & career coaching services for the high school class of 2021



\$5,000

provides 8 weeks of employment for West End House teens or alumni



\$2,750

supports 1 week of Family Food Program distribution and on-site meals for youth and teens



\$1,000

provides 1 week of mental wellness, fitness and sports programs for 50 youth



\$600

provides 2 weeks of music equipment and arts supplies



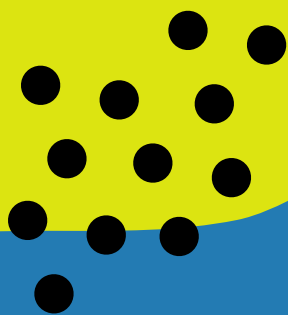
\$300

provides 1 week of STEM and education supplies



\$100

provides 1 day of healthy snacks for 100 kids



Opportunities for Engagement

Volunteer

Connect

with young people in our academic, fitness, arts, or leadership programs

Unload Food

delivered to West End House

Distribute Groceries

to youth & families

More Information:

Sarah MacPherson
Community Engagement Coordinator
smacpherson@westendhouse.org
(617) 870-7513



Network

Share Your Career Path

with West End House alumni interested in your industry and connect them to internships and job opportunities

More Information:

Portsha Franklin
Director of College and Career Pathways
pfranklin@westendhouse.org
(617) 787-4044 ext. 138



Raise Awareness and Support

Join

the 2022 Annual Celebration Event Committee

Host

a Facebook Fundraiser

Organize

a Gift Drive

More Information:

Alexa Urena
Development Operations Coordinator
alexa.urena@westendhouse.org
(617) 870-7498



Enabling our
customers
to make the
world healthier,
cleaner
and safer

VIRAL VECTOR CONTRACT DEVELOPMENT & MANUFACTURING

PROCESS DEVELOPMENT, OPTIMIZATION & SCALE-UP

PRE-CLINICAL & CGMP CLINICAL SUPPLY

ANALYTICAL DEVELOPMENT & VALIDATION

PROCESS CHARACTERIZATION & VALIDATION

ASPETIC FILL & FINISH

COMMERCIAL LAUNCH & SUPPLY

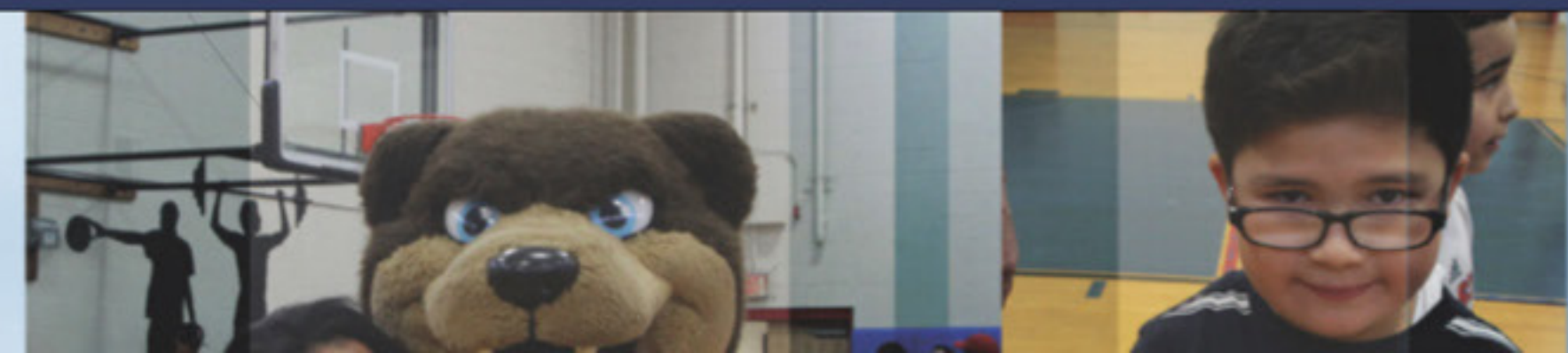


FOUNDATION
TO BE NAMED LATER



WE SALUTE **WEST END HOUSE** FOR ALWAYS EXPECTING MORE
AND GIVING MORE!

PETER GAMMONS, THEO EPSTEIN, PAUL & SASKIA EPSTEIN, ALLYCE NAJIMY
THE FOUNDATION TO BE NAMED LATER AND HOT STOVE COOL MUSIC

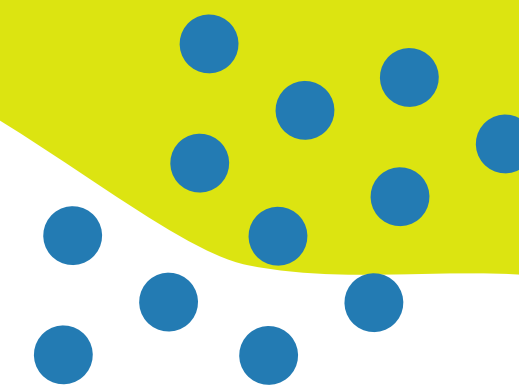


**We Are Pleased to Support the
West End House Boys & Girls Club
We salute your innovative and
responsive programming for
Boston youth.**



Over 65 Years in The Greater Boston Community
39 Brighton Avenue, Boston, Massachusetts 02134
www.thehamiltoncompany.com

**The John A. Parker Family Trust
thanks the dedicated and
inspirational staff of West End
House for their extraordinary
work over the past year.**





We are changing what it means
to be diagnosed with solid tumors
by harnessing the TCR complex.



We are proud to support the West End House
and thrilled to be sponsoring meaningful programs
that excite students about the possibilities of science.

Learn more about our approach.

www.tcr2.com





Sanofi is dedicated to supporting people through their health challenges. We are a global biopharmaceutical company focused on human health. We prevent illness with vaccines, provide innovative treatments to fight pain and ease suffering. We stand by the few who suffer from rare diseases and the millions with long-term chronic conditions.

With more than 100,000 people in 100 countries, Sanofi is transforming scientific innovation into healthcare solutions around the globe.

Sanofi, Empowering Life

Sanofi is a proud supporter of the West End House and the impact you are making in the Community.

www.sanofi.com
www.sanofi.us

